

# Stamping With COPIC®



*Learn how to use  
Copic Markers & Inks  
with your next stamping project*



## Why Copic?

- Alcohol Markers in 4 styles
- Easy-to-use Inks
- Rich, vibrant colors
- Smooth coloring & blending
- Refillable, replaceable tips
- Airbrushing
- Permanent on many surfaces
- Up to 322 colors
- Non-toxic, dries Acid-free\*
- Won't dissolve toner on photo copies



## A Lifetime of Stamping With Copic

Never before has there been the versatility of an alcohol ink combined with the easy application of a marker. These low-odor markers are environmentally friendly, since empty ink bottles can be recycled, and markers can be refilled. Some artists have had the same markers for over 20 years. No other marker guarantees a 3 year shelf-life. Cherish your markers forever.

## Need a colored embellishment? Try Copic!

Copic ink blends smoothly, without damaging paper or streaking. Use the markers or inks directly on your favorite surfaces: metal, ribbon, dried flowers, fabric, glass, leather, easter eggs and more. For even coverage on unusual shapes, try airbrushing.

before



Acorn: Airbrushed  
with Copic marker  
Nickel: colored with  
Sketch markers

after



## Add some Bling with atyou Spica Pens

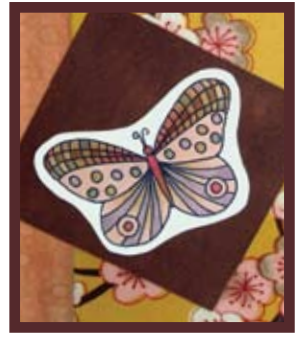
Atyou Spica (pronounced speakah) pens are micro glass flake pens for papercrafting. These pens are pigmented, archival, acid free, available in 13 colors, and have twice the writing length of any other glitter pen.



# Paper for Stamping

Alcohol inks will bleed through most paper stocks, so for best results, color pictures that will be layered onto other paperstock.

For coloring in a stamped area, your image will be most vibrant if you stamp onto clean white or ivory cardstock. Some popular types are: *Classic Crest 80# Solar White* by Neenah, *SU! Whisper White*, *Georgia Pacific White Cardstock*.



*Butterfly from Lockhart Stamp Co.*

# Stamping Inks



*Flower from Inkadinkado*

Since Copic Markers are alcohol based, you'll want to avoid coloring in images stamped with solvent inks like StazOn.

Some of the inks they are compatible with include Versafine Onyx Black & other colors, Ranger Adirondack Inks, Tsukineko Brilliance Ink, or Memories Dye Inkpad. For the most consistent results try heatsetting your image before coloring.

Areas that are heat embossed will color in nicely, since the embossing powder protects the ink line from smudging. Test colored powders to make sure they won't bleed with the markers.

# Coloring Process

- Let all your inks completely dry before coloring with markers. On some papers this may take a while.
- You can heat-set the ink to speed up the process.
- You can emboss your inks before coloring with Copic's.
- Test any new paper or ink you get. Each will react differently. If one of our suggested inks doesn't work for you, try it on a different paper.
- Avoid coloring over large, densely stamped areas.

Markers bleed through most papers, so always color over a clean scratch paper or other absorbant surface.

For clean, smooth areas color slowly in circles to really saturate the paper. Make sure all your edges stay "wet". This helps to avoid streaking.

If you have a very large area, color it in first with the blender marker. While the paper is still damp, add your marker over the top. This will smooth your colors together better.

Many people enjoy coloring with the flexible brush end of Sketch or Ciao markers. If you prefer a firm tip, you can replace either end of these markers with an optional Medium Round nib.



# Blending With Copic

## Basic Blending- Marker on Paper

Color evenly with a lighter color then add the darker color over it. Where the two colors meet, go over it again with the lighter color, working the two shades together.



### Feathering

1. Using the brush on a Sketch or Ciao, color from one edge of a shape, lifting at the end of each stroke to leave white on the other side.
2. Feather in the next color from the opposite direction.
3. Repeat with each color a couple times until your desired blend is achieved.

### Touching Tip to tip

For small areas, touch one marker directly to the tip of another marker. You can also get a dark to white effect by adding your color directly to a blender marker, then coloring.



### Palette blending

On a piece of plastic, draw a spot of color. Using the color you want to blend with it, touch the spot, picking up the color, and apply it like a paintbrush.

## Colorless Blender Techniques

### For Washed-Out effects

Use the colorless blender over your colored areas to fade and wash out your colors.

Note on the cupcake how the pink washes out to white, the blue fades into the white, and the wrapper gets muted. The more you go over an area, the more it will fade and wash out.

### Blending

The blender will soften edges of color by pushing the dye around. You will get sharp edges if you use it over a dry area, and soft edges if it is wet.

Basic Coloring    Colorless Blender



Versafine ink on Classic Crest  
Colors used: B32, R29, RV21, BV04, V04, 0  
Cupcake from Lockhart Stamp Co.



### For Water-Drip effects

Touch the blender to a dry, colored spot and hold it there. It will push the color out to the edges, leaving a lighter "drip" mark.

## Mixed Media Effects

### Colored Pencil

When using colored pencil, lay your marker color down first, then color over it with your colored pencil. This will keep your tip from getting discolored. If you do put pencil down first, and you get it on your marker tip, quickly scribble onto scratch paper to get it off your tip. It won't ruin your tip, it will just look bad.



Boots from Lockhart Stamp Co.

### Watercolors

Copic Markers and inking pens are waterproof. A common technique is to color in details with the markers, then use watercolors for the background. Your markers will not run.

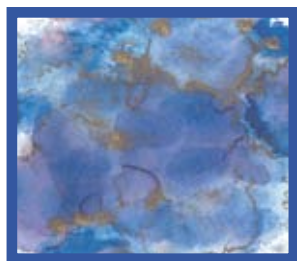
### Other Media

When in doubt, use the marker first. Avoid going over acrylic paints, unfired clay, or whiteout- these may discolor the nib. Your ink will still flow cleanly from the marker, but the tip will look dirty.

## Unusual Papers

### Glossy cardstock

Alcohol ink backgrounds are easy to make on glossy papers which keep the ink fluid on the surface longer so you can move colors around to get collage effects.



Faux Stone made with Copic Inks and Krylon Gold Leafing pen on glossy cardstock

Apply your ink to an applicator or drip directly onto your surface and dab around to achieve the look you desire. Adding Colorless Blender solution will spread the ink as well, perfect for the faux stone look. This effect also works on acetate and sheet metal.



### Vellum

A great technique for coloring on translucent materials is to stamp on one side of the image and then color from the backside. This will keep your stamped image from smudging, and it gives a much softer feel to your colored areas.

### Other Papers

Test any new paper carefully. Very soft papers, like watercolor papers will give you rich color, but will be very hard to blend on since their fibers are so long. They will suck your marker dry faster and may bleed as well. Special Marker papers are coated and very thin, but color sits on the surface, making it tricky to stamp and blend on. Colored or patterned cardstock can be easily toned to the shade you want simply by coloring over it.



Before After  
Paper Source paper toned with a G02 marker

